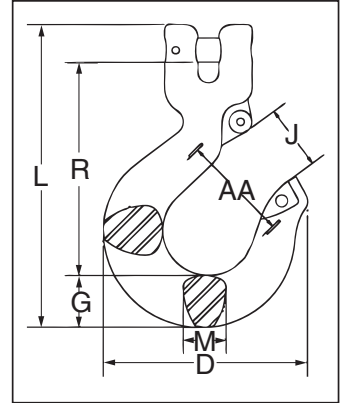


# Crosby® Grade 100 Clevis Sling Hooks



**L-1339**  
Clevis Sling Hook

- Forged Alloy Steel - Quenched and Tempered.
- Individually Proof Tested to 2-1/2 times the Working Load Limit with certification
- Each hook has a Product Identification Code (PIC) for material traceability, along with the size and the name Crosby.
- Hoist hooks incorporate two types of strategically placed markings forged into the product which address two (2) **QUIC-CHECK®** features: Deformation Indicators and Angle Indicators.
- Low profile hook tip
- New integrated latch (S-4320/S-4339) meets the world standard for lifting.
  - Heavy duty stamped latch interlocks with the hook tip.
  - High cycle, long life spring.
  - When secured with the proper cotter pin through the hole in the tip of hook, meets the intent of OSHA Rule 1926.1431(g) and 1926.1501(g) for personnel lifting.
- Suitable for use with Grade 100 and Grade 80 chain.
- Fatigue rated at 1-1/2 times the Working Load Limit at 20,000 cycles.
- "Look for the Platinum Color - Crosby Grade 100 Alloy Products."



**Crosby 8/10™**

**"QT"**

**Fatigue Rated®**

**QUIC-CHECK®**

## L-1339 Clevis Sling Hook

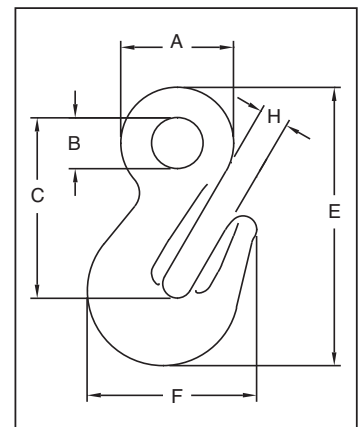
Chain Size		Working Load Limit (t)*	Hook ID Code	L-1339 Stock No.	Weight Each (kg)	Dimensions (mm)							S-4320 Rep. Latch Stock No.	S-4339 Rep. Latch Stock No.
(in)	(mm)					D	G	J	L	M	R	AA		
-	6	1.5	DA	1049103	0.29	72.6	18.5	23.6	107	16.0	74.9	38.1	1096325	-
1/4	7	2.0	HA	1049112	0.72	98.0	26.4	30.2	144	19.1	101	50.8	1096468	-
5/16	8	2.6	HA	1049121	0.71	98.0	26.4	30.2	144	19.1	100	50.8	1096468	-
3/8	10	4.0	IA	1049130	1.17	111	30.2	38.9	171	25.4	120	63.5	1096515	-
1/2	13	6.8	JA	1049149	2.39	142	36.6	45.2	213	29.7	150	76.2	1096562	-
5/8	16	10.3	KA	1049158	4.45	172	48.0	61.2	259	36.6	177	102	1096609	-
3/4	18-20	16.0	-	1049167	8.30	211	71.9	68.3	332	50.0	203	114	-	1048714
7/8**	22-23**	21.0	-	1049176	11.2	233	78.0	77.5	355	50.0	223	127	-	1048732

\* Ultimate Load is 4 times the Working Load Limit. \*\* 7/8 in (22-23 mm) size does not have cam, latch attaches to unique pin.



**A-1328**  
Eye Grab Hook

- Forged Alloy Steel - Quenched and Tempered.
- Individually Proof Tested to 2-1/2 times the Working Load Limit with certification
- Each hook has a Product Identification Code (PIC) for material traceability, along with the size and the name Crosby.
- Suitable for use with Grade 100 and Grade 80 chain.
- Fatigue rated at 1-1/2 times the Working Load Limit at 20,000 cycles.
- "Look for the Platinum Color - Crosby Grade 100 Alloy Products."



**Crosby 8/10™**

**"QT"**

**Fatigue Rated®**

**QUIC-CHECK®**

## A-1328 Eye Grab Hook

Chain Size		Working Load Limit (t)*	A-1328 Stock No.	Weight Each (kg)	Dimensions (mm)					
(in)	(mm)				A	B	C	E	F	H
1/4 - 5/16	7 - 8	2.6	1026169	.45	44.5	19.1	70.9	109	66.3	11.2
3/8	10	4.0	1026187	.73	52.3	23.9	84.6	130	78.5	13.5
1/2	13	6.8	1026196	1.5	65.0	28.4	104	162	97.3	16.8
5/8	16	10.3	1026205	2.7	78.0	33.3	125	194	115	20.0
3/4	18-20	16.0	1026214	4.5	82.6	38.1	137	223	152	23.9
7/8	22-23	20.0	1026223	6.0	100	46.0	165	257	166	27.7
1	26	27.1	1026232	8.6	113	50.8	183	291	197	30.2
1 1/4	32	41.0	1026241	18.0	143	60.5	231	371	241	38.1

\* Ultimate Load is 4 times the Working Load Limit.