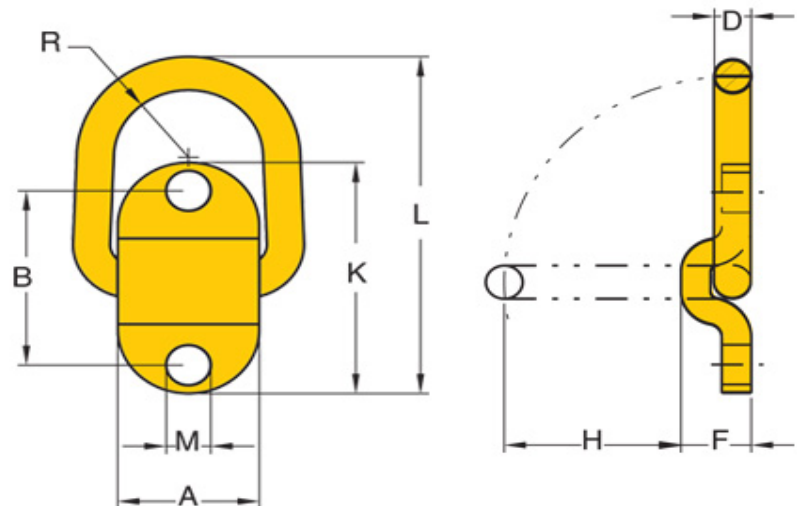


## Yoke Grade 8 Bolt-on Lifting Point BS EN 1677-1+2

The William Hackett Grade 8 forged lifting components are manufactured by YOKE from alloy steel in accordance with EN1677. All forged components are individually magnaflux crack detected after heat treatment, they are then individually proof load tested to 2.5 times working load limit in accordance with EN1677. Only components fully compliant with all aspects of EN1677 can be used in chain slings certified to EN818-4. The William Hackett Grade 8 lifting components are suitable for use in a temperature range of -40°C up to 200°C without reduction in working load limit.

### USES

- Designed to be semi-permanent lashing or lifting point
- Suitable for attachment to lifting beams and spreader beams



### SPECIFICATIONS

Part Code	W.L.L tonnes	A mm	B mm	D mm	F mm	K mm	H mm	M mm	L mm	R mm	Box Quantity	Mass Kg
8-058-1T	1.0	50	72	14	27	98	55	14	139	24	25	0.8
8-058-3T	3.0	58	84	17	33	114	50	16	144	29	20	1.1
8-058-5T	5.0	64	116	22	43	160	74	20	203	33	8	2.5

Click here to view video of Yoke Load Attachment Products

<http://www.yoke.net/video/en.asp>