

Electric winch model RPE

Capacity 250 - 1000 kg

Winches series RPE and RPA are designed explicitly for performance, efficiency and safety and offer many advantages and options. RPE's and RPA's extremely compact, practical cube design and universal rope lead-offs allow individual applications in almost any position and make them powerful aids for lifting and pulling loads.

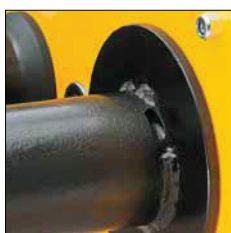
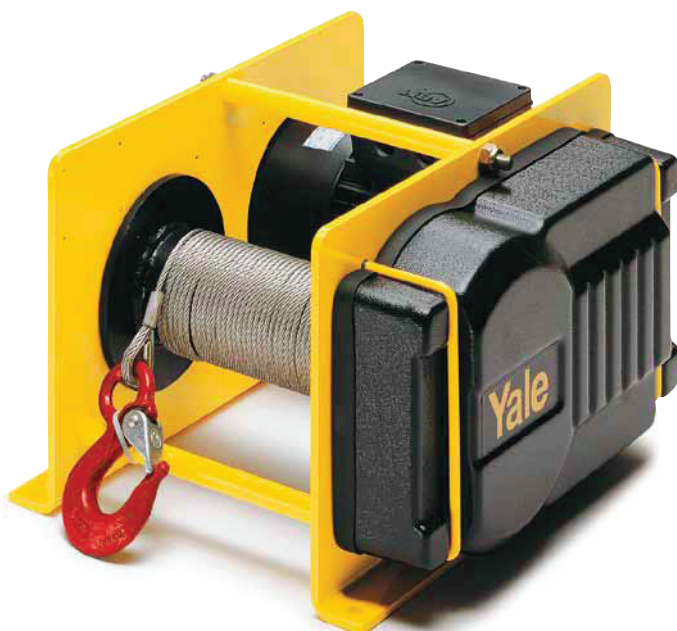
The winches are designed to DIN 15020, classification 1 Bm/M3, safety regulation BGV D8 (winch, lift and pull equipment) and, of course, the EC machinery directives.

Every winch is factory tested with overload.

The units are supplied with a test certificate showing the unit's serial-no. and an operating instructions manual which contains a manufacturer's declaration.

Features

- Compact dimensions due to internal brake motor.
- Voltage 400V/230V, 3-phase, 50Hz, protected to IP 54, insulation class F.
- Adjustable slip clutch to protect the winch from overloading standard for model RPE 10-6.
- Spur gear transmission with helical first gear ensures smooth motion. Lubricated by grease and can, therefore, be used in any position.
- Spring pressure disc brake incorporated in the motor holds the load secure even in the event of a power failure.
- Plain rope drum standard.
- The rope is secured to the drum in a recess so that the rope can be wound onto the drum in several layers without damage.
- Direct control or 42V low voltage control (incl. push-button with emergency-stop and 2 m control cable).



Rope attachment



Spring pressure disc brake



Brake motor

When selecting the length of the rope please bear in mind that a minimum of 2.5 windings have to remain on the drum (approx. 1 m rope).

Options

- Different drum designs, e.g. extended to accommodate longer rope, machined grooves for exact reeling, with separation web and 2nd rope outlet for working with two ropes.
- Geared limit switches to limit rope motion in both directions (in combination with 42V low voltage control).
- Single-phase A.C. motor 230V, 50 Hz, 42V low voltage control.
- Slack rope switch to automatically stop the winch when rope tension eases e.g. when the load touches down (only in combination with low voltage control).
- Frequency converter for stepless speed control.
- Adjustable slip clutch to protect the winch from overloading for models RPE 2-13, RPE 5-6 and RPE 5-12.
- Special design according to BGV C1 for theater stage applications available.
- Radio remote control
- Other operating voltages
- Stainless brake



Special design for wind energy as well as customised constructions on request.
Also available as zinc-plated version on request.



Single-phase A.C. motor



Geared limit switches



Gearbox with slip clutch



Different drum designs

Hoisting Equipment Electric & Pneumatic winches

Technical data model RPE

Model	EAN-No. 4025092*	Capacity kg	Lifting speed 1 st layer m/min	Lifting speed top layer m/min	Rope diameter mm	Motor kW	ED %	Useable rope length 1 st layer m	Useable rope length top layer m	Weight without rope kg
RPE 2-13	*071796	250	10.2	13.2	4	0.55	40	11.2	54.5	31.8
RPE 5-6	*071857	500	4.6	6.6	6	0.55	40	7.0	38.8	32.8
RPE 5-12	*071918	500	8.7	12.6	6	1.1	40	11.0	55.4	41.0
RPE 9-6	*071956	990	5.1	6.5	8	1.1	40	10.2	37.4	76.0
RPE 10-6*	*072014	1000	5.1	6.5	8	1.1	40	10.2	37.4	76.9

*With slip clutch

Plain drum (longer useable rope length)

Model	Capacity top layer kg	Drum size	Useable rope length max. m
RPE 2-13 L	250	2	80
RPE 5-6 L	500	2	58
RPE 9-6/10-6 L	990/1000	2	56
RPE 2-13 XL	250	3	200
RPE 5-6 XL	500	3	140
RPE 5-12 XL	500	3	140
RPE 9-6/10-6 XL	990/1000	3	100

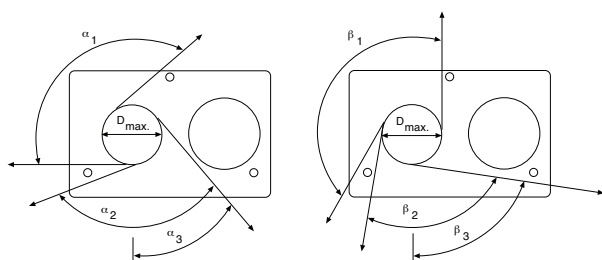
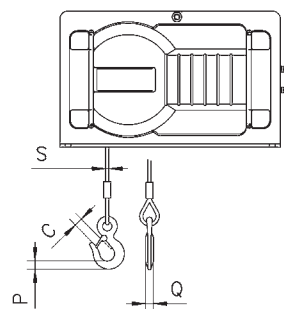
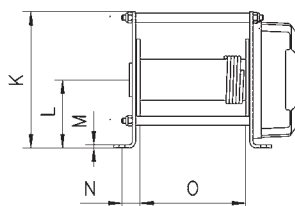
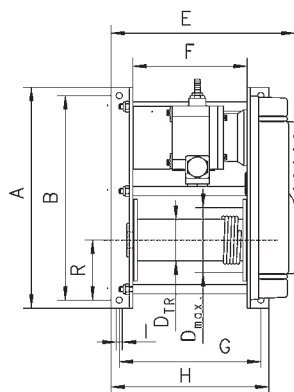
Grooved drum (recommended for single layer operation)

Model	Capacity top layer kg	Drum size	Useable rope length 1 st layer m	Useable rope length max. m
RPE 2-13 R	250	1	8.8	43
RPE 5-6 R	500	1	6.2	33
RPE 9-6/10-6 R	990/1000	1	8.2	30
RPE 2-13 LR	250	2	13.3	64
RPE 5-6 LR	500	2	9.5	49
RPE 5-12 LR	500	2	9.5	49
RPE 9-6/10-6 LR	990/1000	2	12.9	47
RPE 2-13 XLR	250	3	35.3	165
RPE 5-6 XLR	500	3	25.7	128
RPE 5-12 XLR	500	3	25.7	128
RPE 9-6/10-6 XLR	990/1000	3	25.2	89

Dimensions model RPE (400 V direct control, standard drum)

Model	RPE 2-13	RPE 5-6	RPE 5-12	RPE 9-6	RPE 10-6
A, mm	405	405	405	525	525
B, mm	375	375	375	485	485
C, mm	18	18	18	25	25
DTR, mm	76	76	76	108	108
D max, mm	104	118	118	148	148
DA, mm	150	150	150	180	180
E, mm	338	338	428	450	450
F, mm	210	210	300	270	270
G, mm	260	260	350	345	345
H, mm	290	290	380	380	380
I, mm	11	11	11	13	13
K, mm	250	250	250	340	340
L, mm	125	125	125	170	170
M, mm	6	6	6	10	10
N, mm	33	33	33	47.5	47.5
O, mm	194	194	284	250	250
P, mm	19	19	19	24	24
Q, mm	13	13	13	19	19
R, mm	125	125	125	170	170
S, mm	4	6	6	8	8
$\alpha 1, ^\circ$	130	130	130	145	145
$\alpha 2, ^\circ$	110	110	110	125	125
$\alpha 3, ^\circ$	40	40	40	50	50
$\beta 1, ^\circ$	150	150	150	155	155
$\beta 2, ^\circ$	90	90	90	100	100
$\beta 3, ^\circ$	80	80	80	83	83

*Dimensions for s with optional features are available on request!



Rope lead-offs for electric winch RPE

Yale winches are not designed for passenger elevation applications and must not be used for this purpose.